

# Year 2 Owls Class



## **Curriculum Newsletter** **Summer 2 - 2025**

Dear parents and carers,

Welcome back to school for our last half term of Year 2!

Details of our curriculum for this half-term can be found below. Remember you can follow our Instagram feed and see what we are doing.

A few reminders:

- \*Reading books will be changed on a Tuesday morning, please make sure that a comment has been written in so that we can change them!
- \*School is a nut free school, this includes no nuts in lunch boxes (no hazelnut spreads) and sweets/chocolates brought in to share for birthdays.
- \*The school day is 8.50am to 3.20pm. The gates are locked at 9am and any late comers will need to report to reception. If any children have not been collected by 3.30pm they will be taken to the Arc after school club and charges may apply.

This half term we will be forest school on a Tuesday afternoon. Please send your children into school in their PE kit on a Tuesday, as well as Wednesday and Friday for PE.

Any questions or concerns you can always catch me at morning drop off or afternoon pick up!

Best wishes,

Miss Marsland

## English

The English Framework at ACE includes a daily session of Book Club. The children are grouped according to the phonics phase they are working in. Within these Book Club sessions there are phonics activities and guided reading activities. Homework will be uploaded to BugClub on a Friday. In addition to this please read with your child whenever possible! Our English lessons include grammar and spellings bursts and activities around a key text. Y2 Key Text is 'Grandad's Secret Giant' by David Litchfield.



## Maths

We follow the White Rose Maths Scheme.



Year 2 will be starting the half term with 'statistics' before moving on to 'position and direction'. Maths homework will be uploaded onto MyMaths every Friday for the children to complete.

## Religious Education

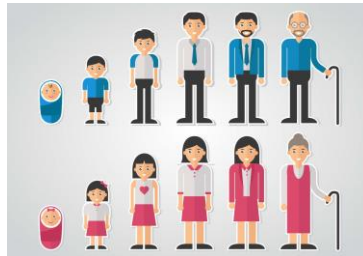
Our lessons are based on the Questful RE scheme. Year 2 will be learning about the Ascension and Pentecost.



## Science

We follow the White Rose Education Scheme for science.

Year 2 will be learning about 'growing up' before moving onto 'wildlife'.



## Music

This half term we will be using the Creative Music Scheme on Charanga. We will be listening to the song 'It's OK (Please Just Say)'.



## History

This half term KS1 will be learning about Significant people in history including Christopher Columbus and Ibn Battuta.



## COAL

Creative, outdoor and adventurous learning. Year 2 will have forest school on a Tuesday afternoon with Mrs Eaton.



## PE

We follow a scheme called 'PE Passport'. The topic this half term is Net and Wall Game Skills. We will also be practicing for sports day which is at the beginning of July.



## PSHE

We follow the Jigsaw scheme for PSHE. The theme for this half term is 'Changing Me' where we will look at the changes that will happen throughout our lives.



## Worship

Every week your child will be participating in whole school, Key Stage and class worships.

